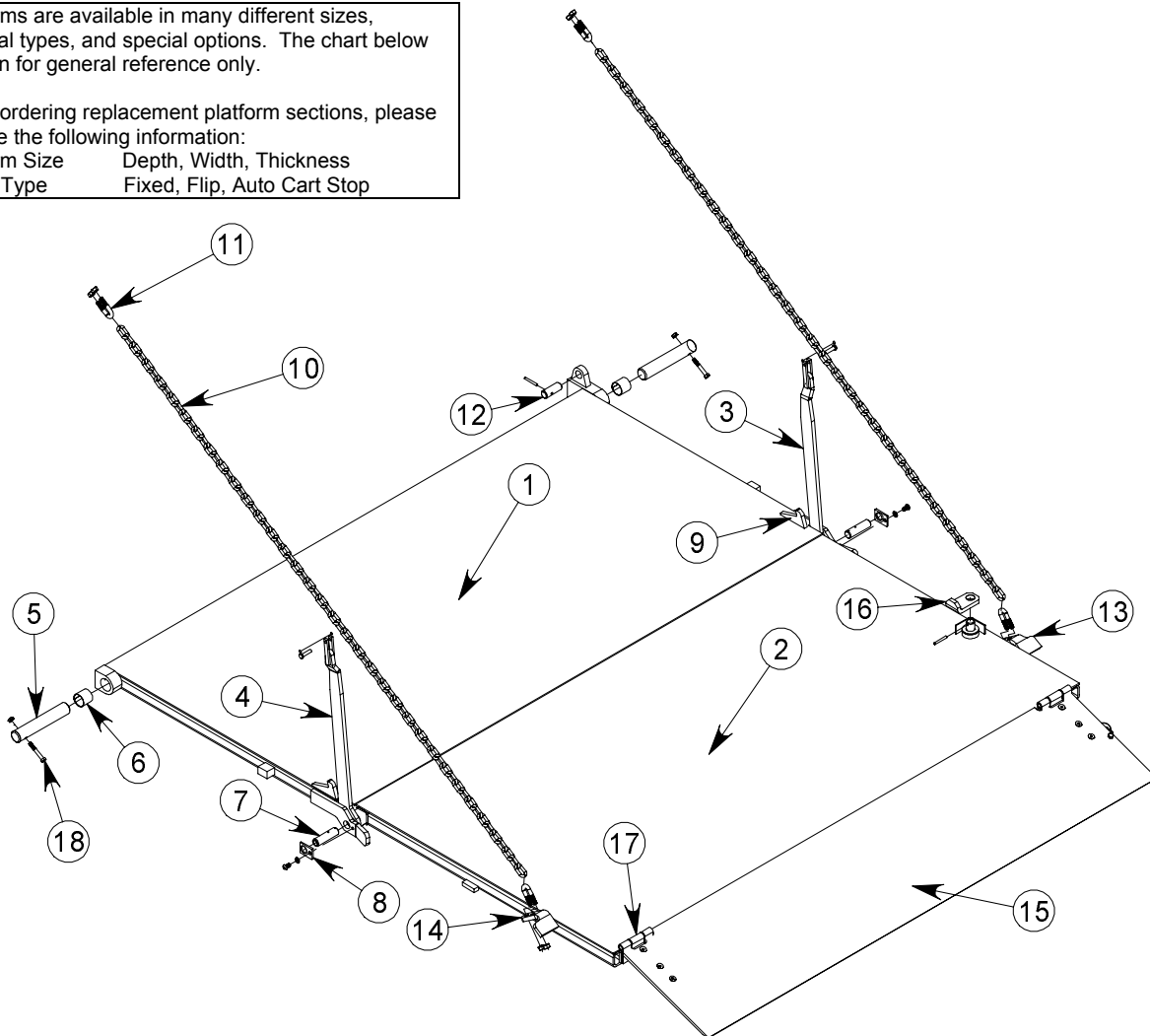


Platform – ILD55 and ILD66

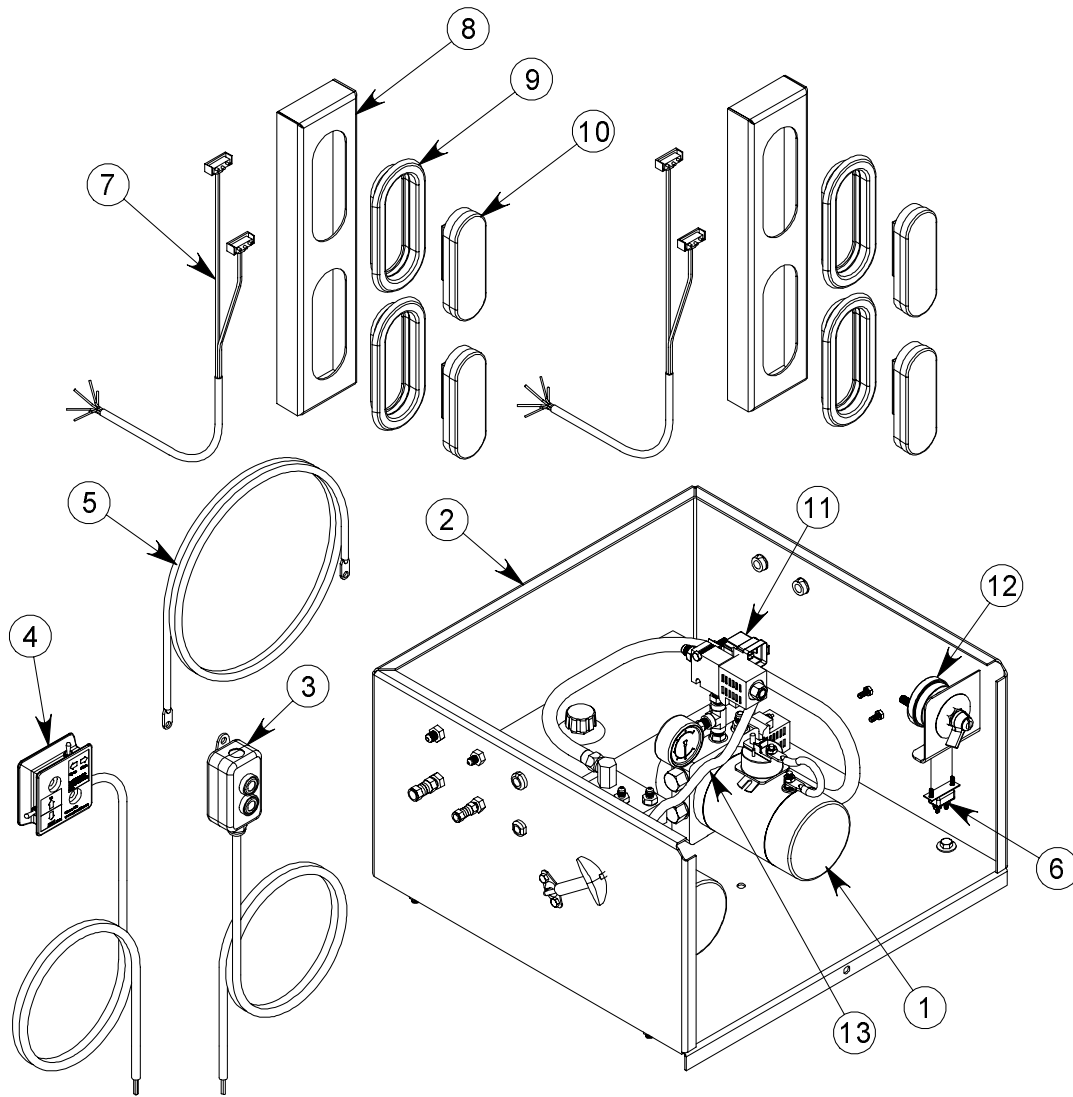
Platforms are available in many different sizes, material types, and special options. The chart below is given for general reference only.

When ordering replacement platform sections, please provide the following information:
 Platform Size Depth, Width, Thickness
 Ramp Type Fixed, Flip, Auto Cart Stop



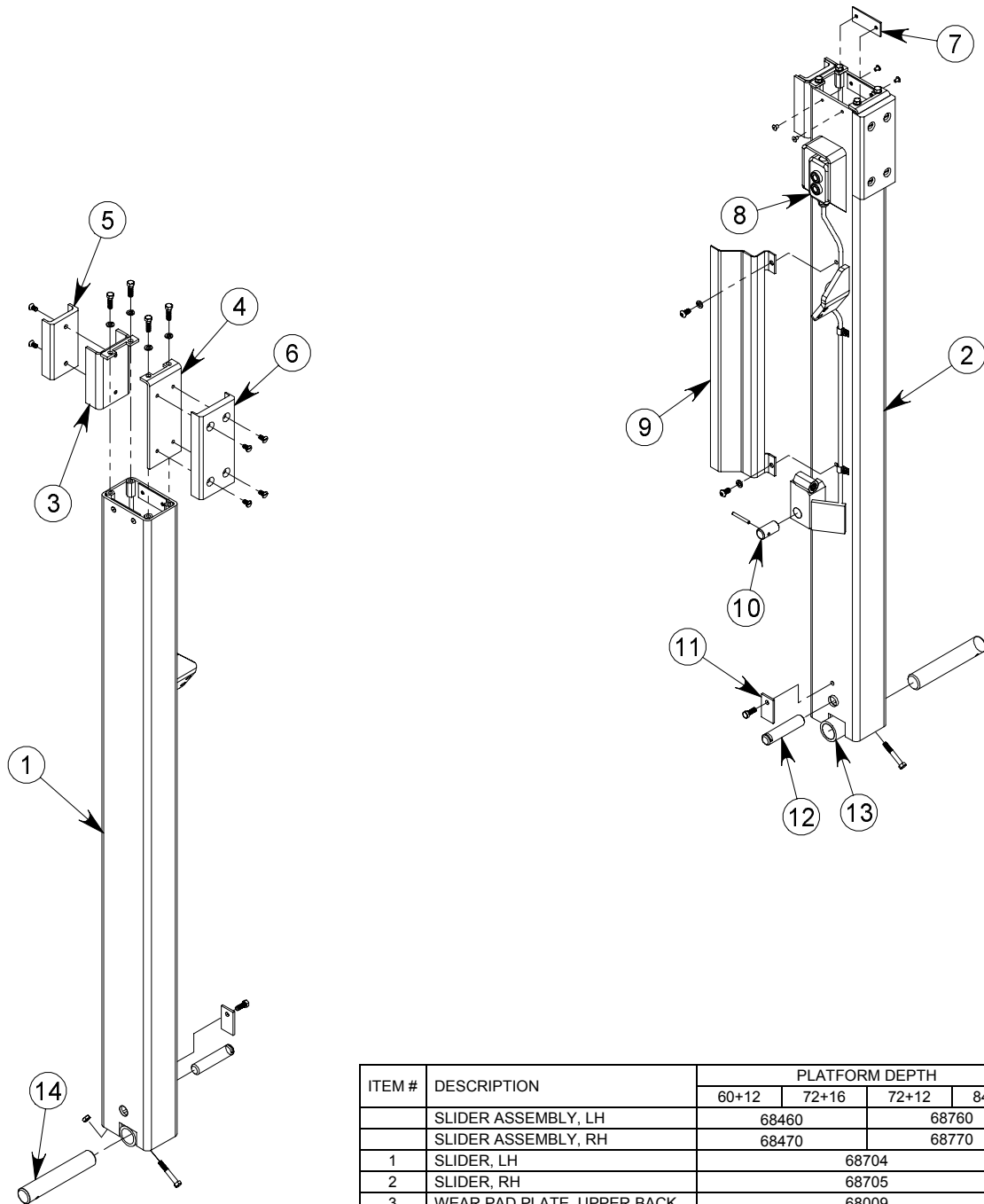
ITEM #	DESCRIPTION	DV60								QTY
		80x60+12	80x72+16	80x72+12	80x84+16	86x60+12	86x72+16	86x72+12	86x84+16	
	PLATFORM ASSEMBLY	68641	68462	68463	68464	68465	68466	68467	68468	1
1	PLATFORM , MAIN	68859		68830		68861		68831		1
2	PLATFORM, RAMP	68860	68879	68824	68826	68862	68880	68827	68829	1
3	SIDE ARM, RH	68885		68730		68885		68730		1
4	SIDE ARM, LH	68886		68731		68886		68731		1
5	PIN, SLIDER HINGE					68739				2
6	BUSHING					68119				2
7	PIN, PLATFORM HINGE					68741				2
8	LOCKING TAB, PLATFORM					68742				2
9	DOCK LOCK					68794				2
10	SIDE CHAIN	68305 - 67"		68305 - 80"		68305 - 67"		68305 - 80"		2
11	U-BOLT					16199				4
12	PIN, POC CYLINDER					68529				1
13	TRAVEL EAR, RH					68708				1
14	TRAVEL EAR, LH					68709				1
15	FLIP RAMP	-	68838	-	68838	-	68832	-	68838	0/1
16	LATCH, FLIP RAMP	-	68142	-	68142	-	68142	-	68142	0/1
17	HINGE, FLIP RAMP	-	40094	-	40094	-	40094	-	40094	0/2
18	BOLT, HINGE PIN					30016				2

Electrical Components



ITEM #	DESCRIPTION	ILD35 ILD44	ILD55 ILD66	QTY
1	POWER UNIT	68030	68839	1
2	POWER UNIT BOX		68676	1
3	SWITCH, SLIDER MOUNT		68337	1
4	SWITCH, MAIN		68891	1
5	BATTERY CABLE		20725	1
6	CIRCUIT BREAKER, 15 AMP		11062	1
7	HARNESS, TWO LIGHT		68231	2
8	BRACKET, TWO LIGHT, OVAL		68164	2
9	GROMMET, OVAL LIGHT		16137	4
10	LIGHT, STOP, LED		16416	4
11	RELAY		20870	1
12	MASTER DISCONNECT		20450	1
13	WIRE HARNESS		68335	1

Slider Assembly



ITEM #	DESCRIPTION	PLATFORM DEPTH				QTY
		60+12	72+16	72+12	84+16	
	SLIDER ASSEMBLY, LH	68460		68760		1
	SLIDER ASSEMBLY, RH	68470		68770		1
1	SLIDER, LH		68704			1
2	SLIDER, RH		68705			1
3	WEAR PAD PLATE, UPPER BACK		68009			2
4	WEAR PAD PLATE, UPPER FRONT		68014			2
5	WEAR PAD, UPPER BACK		68011			2
6	WEAR PAD, UPPER FRONT		68024			2
7	WEAR PAD, CYLINDER		68048			4
8	SWITCH, SLIDER MOUNT		68337			1
9	HOSE GUARD		68533			1
10	PIN, POC, UPPER		68528			1
11	LOCKING TAB, CYLINDER PIN		68018			2
12	PIN, CYLINDER, LOWER		68033			2
14	HINGE TUBE		68623			2

