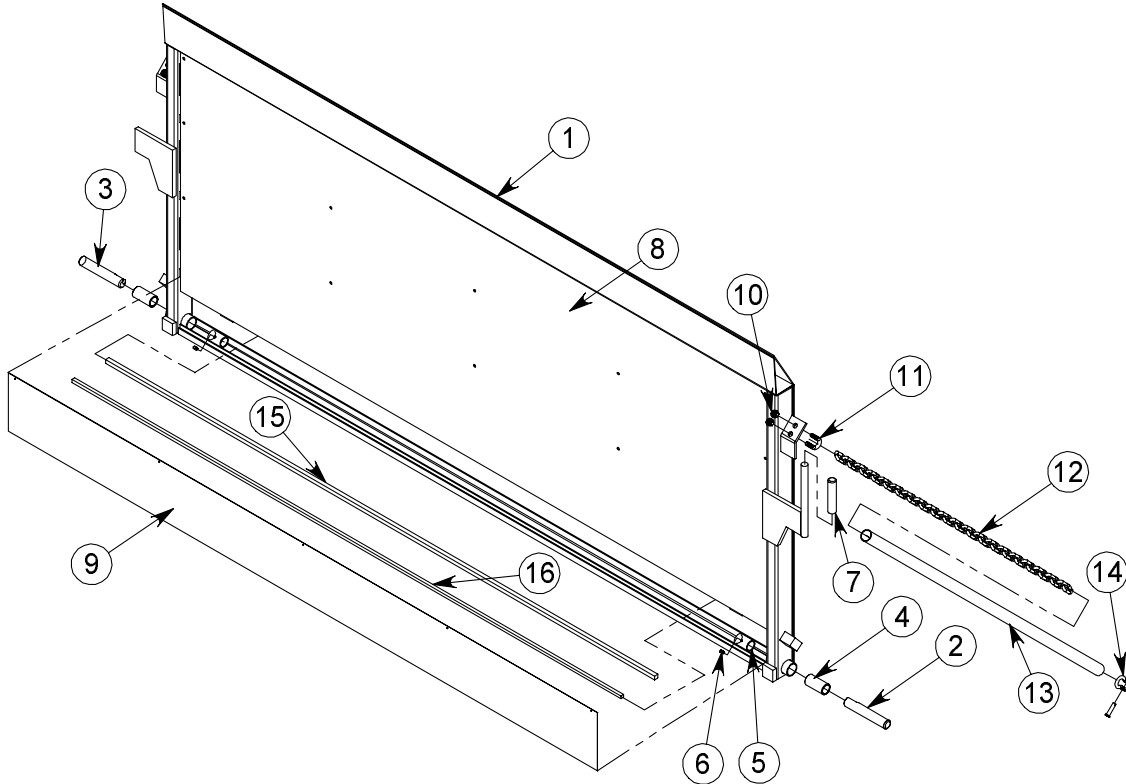


Platform

Platforms are available in many different sizes, material types, and special options. The chart below is given for general reference only.

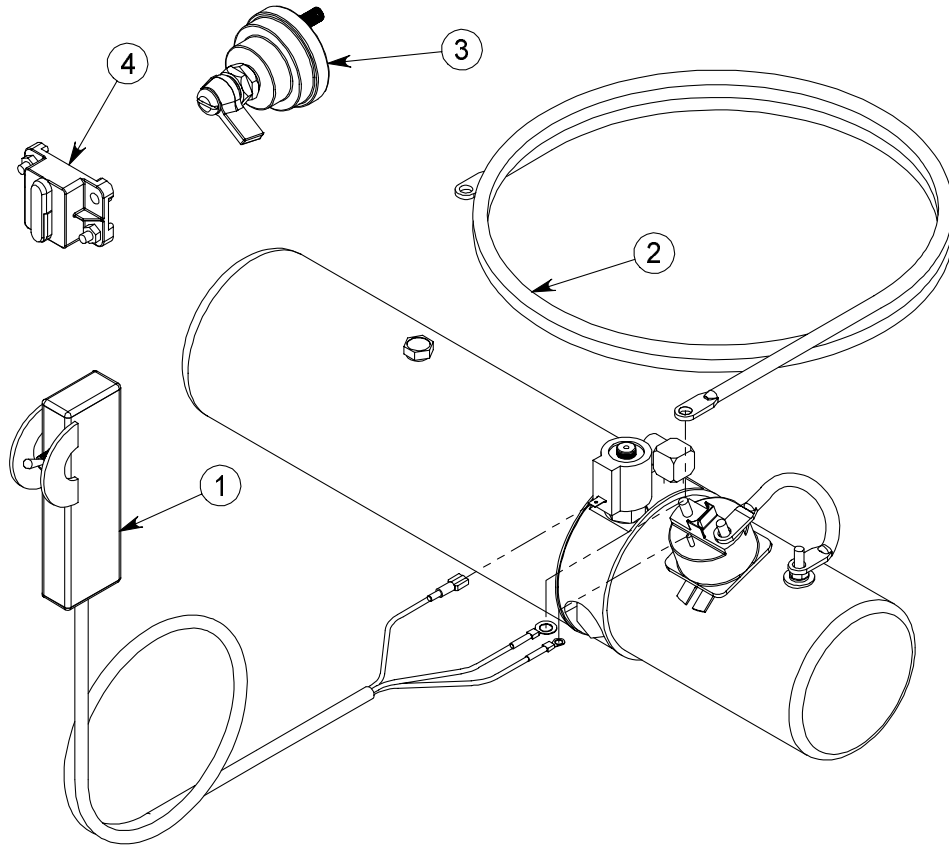
When ordering replacement platform sections, please provide the following information:

Platform Size Depth, Width, Thickness
 Material Type Steel, Aluminum
 Ramp Type Fixed, Flip, Auto Cart Stop



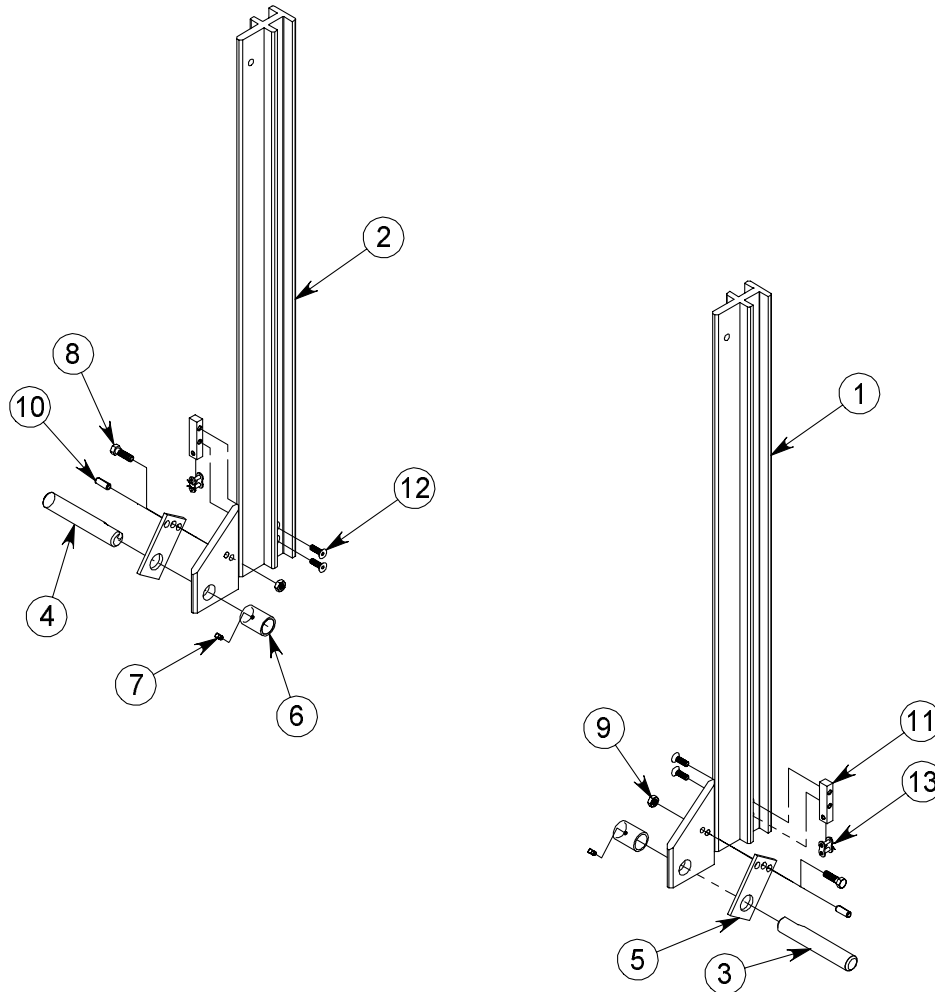
ITEM #	DESCRIPTION	73"X30"	89"X30"	89"X36"	89"X42"	73"X30"	89"X30"	89"X36"	89"X42"	89"X48"	89"X54"	89"X60"	QTY
1	ENTIRE PLATFORM	STEEL	STEEL	STEEL	STEEL	ALUM	ALUM	ALUM	ALUM	ALUM	ALUM	ALUM	1
2	HINGE PIN, RH	16494	16494	16495	16495	16494	16494	16494	16495	16207	16207	20265	1
3	HINGE PIN, LH	16494	16494	16494	16495	16494	16494	16494	16494	16207	16207	20265	1
4	BUSHING					20123						20124	2
5	COLLAR, HINGE PIN					12213						20205	2
6	SCREW, SQUARE HEAD						20212						2
7	HANDLE, RUBBER	N/A		20292*					N/A				1
8	COVER, BILLBOARD	11089	11098	11096	11097				N/A				1
9	COVER, TORSION BAR	11101		12000					20174				1
10	NUT						16200						2
11	U-BOLT						16199						2
12	SIDE CHAIN	20213		20213		20213	20213						2
		31 LINKS		38 LINKS*									
13	CHAIN SLEEVE	12382		16382*		12382			16382				2
14	SHACKLE						20216						4
15	TOSION BAR	20037	20237	20241	20241	20037	20237	20237	20241	20241	20241	20245	2
16	TORSION BAR	20037	20237	20237	20241	20037	20237	20237	20237	20241	20241	20245	2

Electrical Components



ITEM #	DESCRIPTION	PART #	QTY
1	TOGGLE SWITCH ASSEMBLY	10179	1
2	CABLE, BATTERY	16369	1
3	MASTER DISCONNECT SWITCH	20450	1
4	CIRCUIT BREAKER	20453	1

Slider Assembly



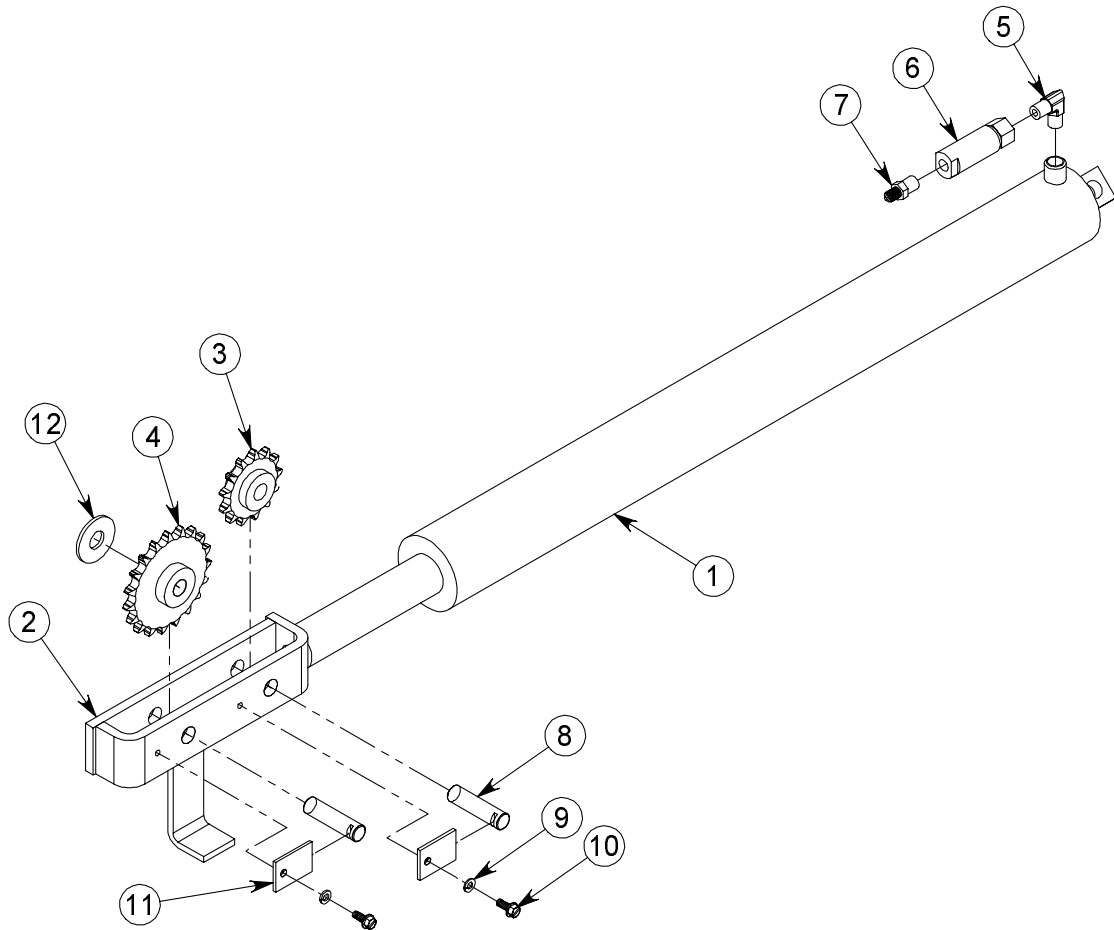
ITEM #	DESCRIPTION	ILM12		ILM16-ILM30					QTY	
		73"X30"	89"X30"	89"X30"	89"X36"	89"X42"	89"X48"	89"X54"		89"X60"
1	SLIDER ASSEMBLY, RH	12054*		20535*			16007*		1	
2	SLIDER ASSEMBLY, LH	12055*		20536*			16008*		1	
3	HINGE PIN, RH	16494	16494	16494	16494	16495	16207	16207	20265	1
4	HINGE PIN, LH	16494	16494	16494	16494	16494	16207	16207	20265	1
5	LOCKING TAB	12208						16208		1
6	COLLAR, HINGE PIN	12213						20205		1
7	SCREW, SQUARE HEAD				20212					8
8	BOLT				10085					8
9	NUT				20210					2
10	ROLL PIN				10194					2
11	TERMINATION BLOCK				20006**					4
12	SCREW, TERMINATION BLOCK				10006					2
13	CHAIN, MASTER LINK				20010**					2

*THE SLIDERS ARE REVERSED IN ABOVE FLOOR MODELS

**ILM30'S RECEIVE THE FOLLOWING:

11	TERMINATION BLOCK	30002
13	CHAIN, MASTER LINK	30004

Cylinder Assembly



ITEM #	DESCRIPTION	ILM12 STD	ILM12 AF & ILM16	ILM20	ILM30	QTY
	COMPLETE CYLINDER ASSEMBLY	10123	20578	16216	30117	1
1	CYLINDER	2" X 22½" 12133	2" X 27" 16132	2½" X 27" 40111		1
2	CYLINDER HEAD		10109		20111	1
3	SPROCKET, SMALLER, WITH BEARING		20013		30107	1
4	SPROCKET, LARGER, WITH BEARING		20108		30106	1
5	FITTING, 90° MALE NPT		20473			1
6	FLOW CONTROL		25182		25183	1
7	FITTING, STRAIGHT, NPT-JIC		25021			1
8	PIN, SPROCKET		20016			2
9	WASHER, LOCK		10256			2
10	SCREW, SELF TAPPING		10255			2
11	PIN RETAINER, SPROCKET		20018			2
12	WASHER		20017			1