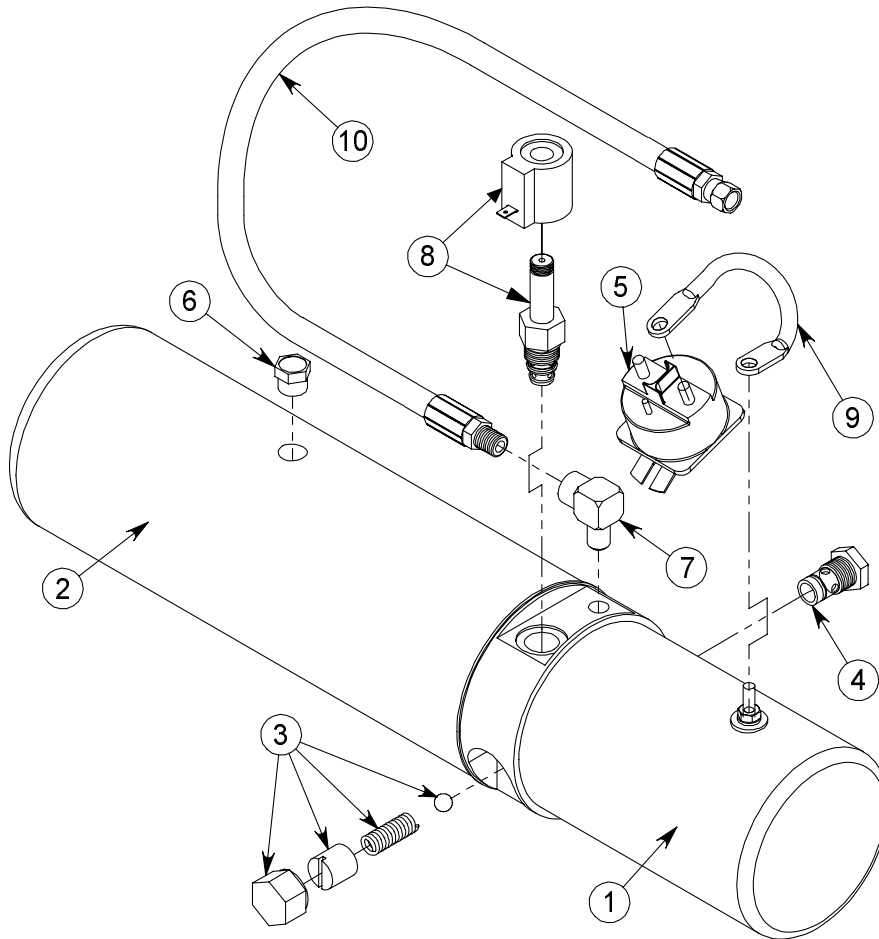
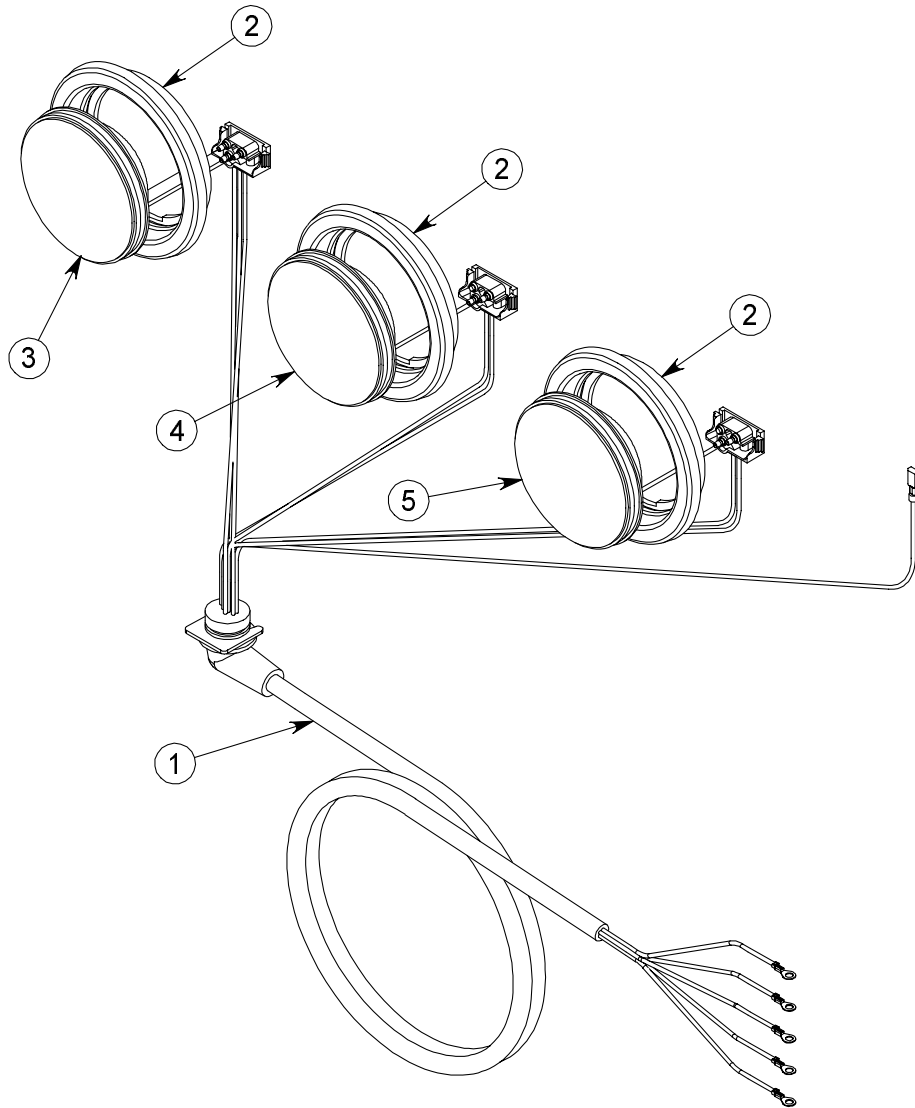


**Hydraulic Power Unit Assembly**



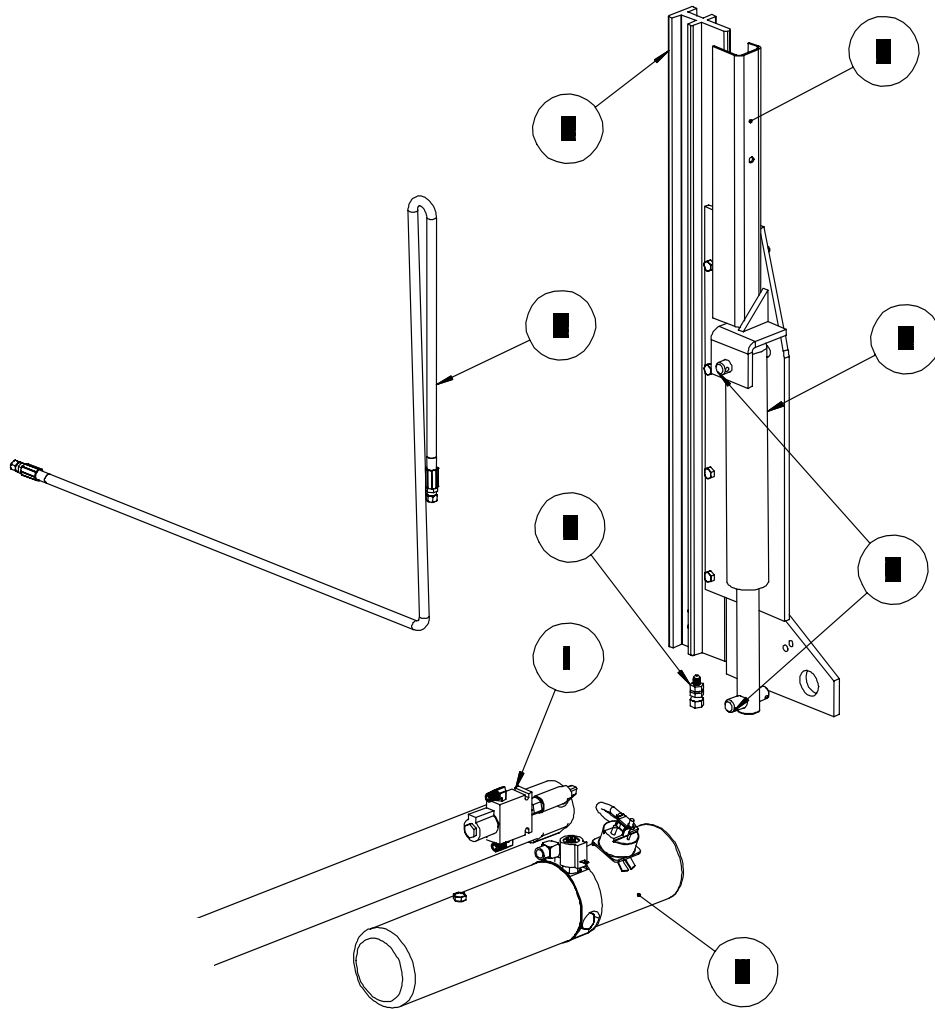
ITEM #	DESCRIPTION	ILM12	ILM16 TO ILM30	QTY
	POWER UNIT ASSEMBLY	DB1462 20622	DB1436 20717	1
1	MOTOR,		25163	1
2	RESERVOIR	12215	25480	1
3	VALVE, RELIEF		68226	1
4	VALVE, CHECK		25477	1
5	SOLENOID, 12VDC		20722	1
6	BREATHER		12291	1
7	FITTING, 90°		20483	1
8	VALVE, RELEASE		10137	1
9	CABLE, SOLENOID		10022	1
10	HOSE, HIGH PRESSURE		10044	1

Light Option



ITEM #	DESCRIPTION	4 LIGHT	6 LIGHT	QTY
	LIGHT KIT ASSEMBLY	16075	16076	2
1	LIGHT HARNESS	16093	16105	2
2	GROMMET, TAIL LIGHT		16059	4/6
3	LIGHT, RED		16062	1
4	LIGHT, YELLOW	N/A	16063	1
5	LIGHT, WHITE		16061	1

**Power Close Option**

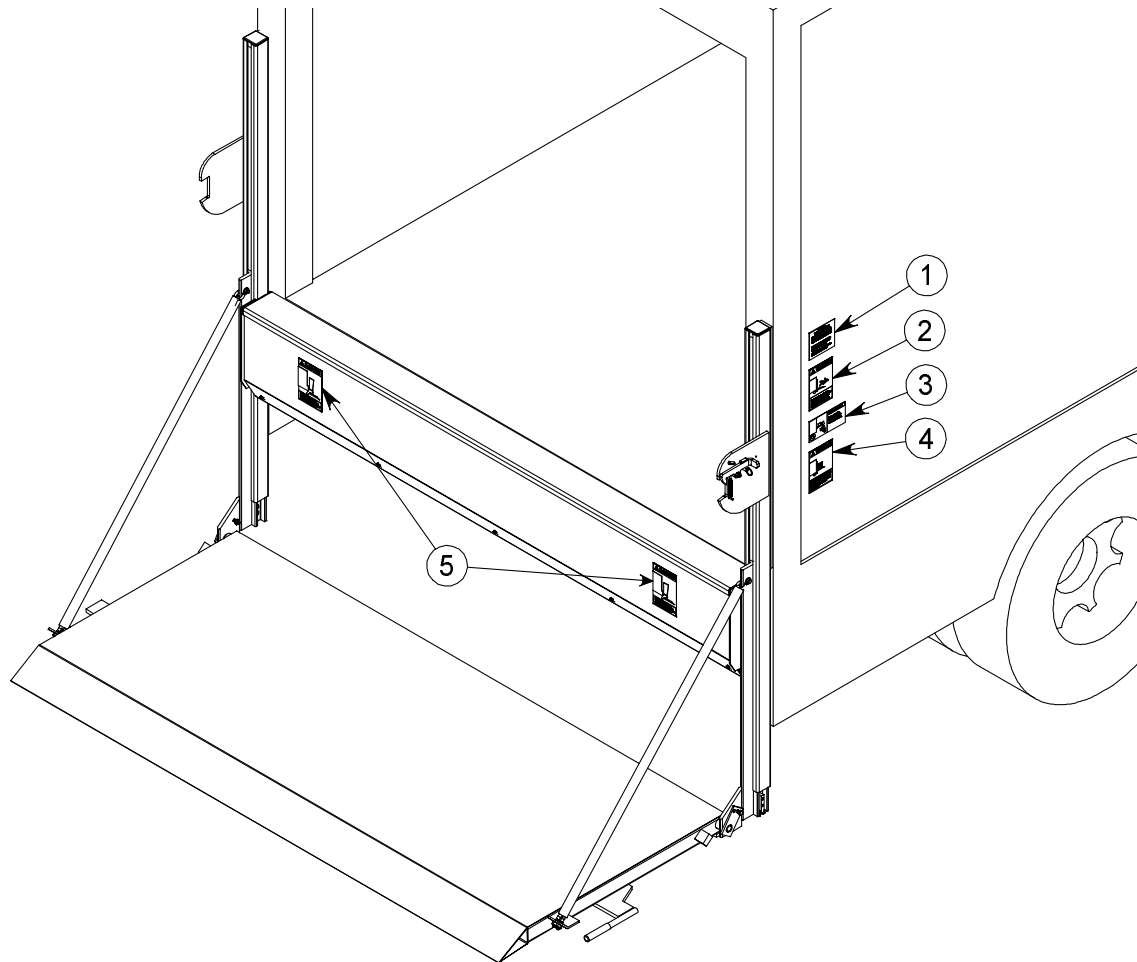


ITEM #	DESCRIPTION	ILM1278	ILM1294	ILM16	ILM20	ILM30	QTY
1	SELECTOR VALVE			20895			1
2	POWER UNIT			20717			1
3	PIN, 3/4"			20881			2
4	CLOSING CYLINDER			20896			1
5	HOSE GUARD			20882			1
6	SLIDER ASSY, RH, PCGO			20906			1
7	BULK HEAD FITTING			20889			1
8	HIGH PRESSURE HOSE, 1/4			20893			1

## Decals

Properly placed warning decals are an essential part of your safety program. Check that all safety decals are in place and are legible. Any missing decals **MUST** be replaced immediately. Replacement decals may be obtained **FREE** of charge from your distributor or by phoning, writing, or faxing us.

Following are the proper decals that you should have and their proper locations:



PART #	DESCRIPTION	ILM12	ILM16	ILM20	ILM30	QTY
1	URGENT WARNING		16181			1
2	WARNING, AVOID RIDING		16182			1
3	WARNING, KEEP CLEAR		20425			1
4	WARNING, MAX. CAPACITY	16178	16179	16180	16185	2
5	DANGER, LIFTGATE CAN CRUSH		20413			2

## Help and Service

With careful maintenance and operation your liftgate should give you years of trouble free use. If a problem does develop, contact your liftgate distributor. They are best equipped to service your liftgate.

If you have suspected warranty problems, contact the distributor from whom you purchased the liftgate. They will normally process your claim from start to finish.

Your distributor will repair your liftgate and get you on the road as quickly as possible. They may invoice you for this service. If the problem is found to be warrantable by Interlift., Interlift will issue your Distributor a credit, which should then be credited back to you.