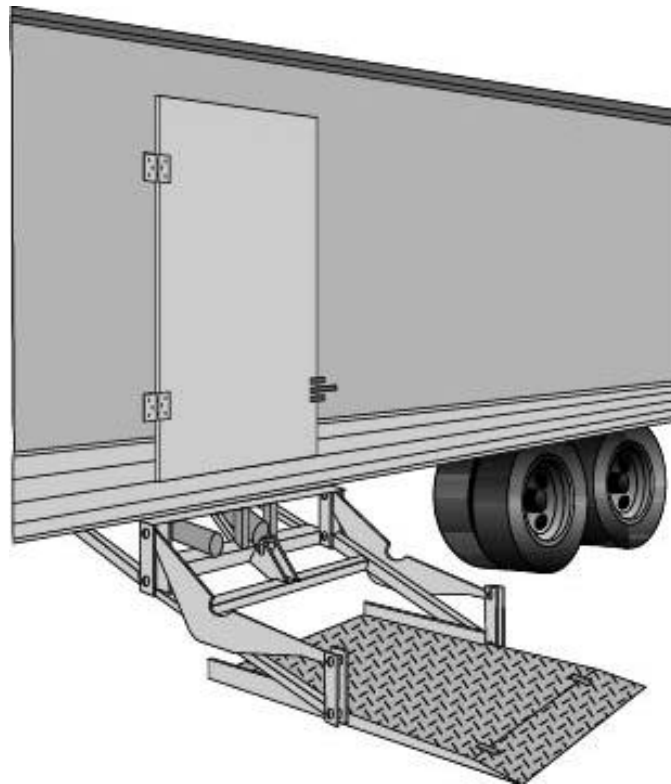




# Owners Manual/ Parts Replacement LSG Hide-A-Way<sup>®</sup> Swivel Side Gate



10900 Kenwood Road • Cincinnati, OH 45242  
Ph: 513.891.6210 • Toll-Free: 866.539.6261  
Fax: 513.891.4901  
[www.leymanlift.com](http://www.leymanlift.com) • [sales@leymanlift.com](mailto:sales@leymanlift.com)

## **WARNINGS**

Before operating or performing any maintenance to this liftgate, read and understand this Owner's Manual and all decals on the liftgate.

- C Do not operate the liftgate if you do not have a thorough understanding of the operating procedures.
- C Do not allow others to operate the liftgate unless they have been properly trained in the operating procedures.
- C Do not stand in front of the platform when unfolding from the vertical position or when operating in any manner.
- C Never exceed the rated load capacity of the gate.
- C Make sure the ground is clear under the platform when lowering.
- C Keep hands and feet clear of all pinch points.
- C Do not operate the liftgate unless the vehicle is on level ground and the parking brake is set.
- C never operate a fork lift on any part of the platform.
- C Always position load as close as possible to the center of the platform.
- C Do not ride on the liftgate. This liftgate is intended for loading and unloading cargo only. It is not a personnel lift.
- C Do not operate the liftgate if it has unusual noises, vibrations, or does not operate freely.
- C Always disconnect the power line from the battery or power source before servicing the liftgate
- C Use only factory authorized parts for replacement.

## **LOAD RATINGS**

LSG3000 - 3000 lbs. Max load

## **FILL IN FOR YOUR RECORDS**

Model No. _____
Serial No. _____
Date Purchased _____ Distributer _____

**Please include this information when ordering parts**

**OPERATING INSTRUCTIONS**

**TO OPERATE THE GATE FROM THE STORED POSITION:**

1. Unhook safety chain from tension arm.
2. Lift lock bar on carrier support.
3. Use walk-around control to raise platform until hanger loops will clear carrier supports when pivoting.
4. Pivot gate 90E until inner frame pins lock into guide plate and latch assembly.

**TO RAISE THE PLATFORM, PRESS THE SWITCH ON THE WALK-AROUND CONTROL UP.**

**TO LOWER THE PLATFORM, PRESS THE SWITCH ON THE WALK-AROUND CONTROL DOWN.**

**TO RETURN THE GATE TO THE STORED POSITION:**

5. Raise the platform approximately 24" off ground.
6. Pull chain to release inner frame pin from latch assembly and pivot gate under the trailer into the carrier supports.
7. Lower platform until hanger loops are resting in carrier supports. Return lock bar to the closed position.
8. Hook safety chain to the tension arm.
9. Disconnect walk-around control from the gate and store in cab of truck.

## **MAINTENANCE**

Regular maintenance should be performed once a month or anytime the liftgate shows signs of abnormal operation.

Operate the liftgate through the full range of all cycles and check for any of the following:

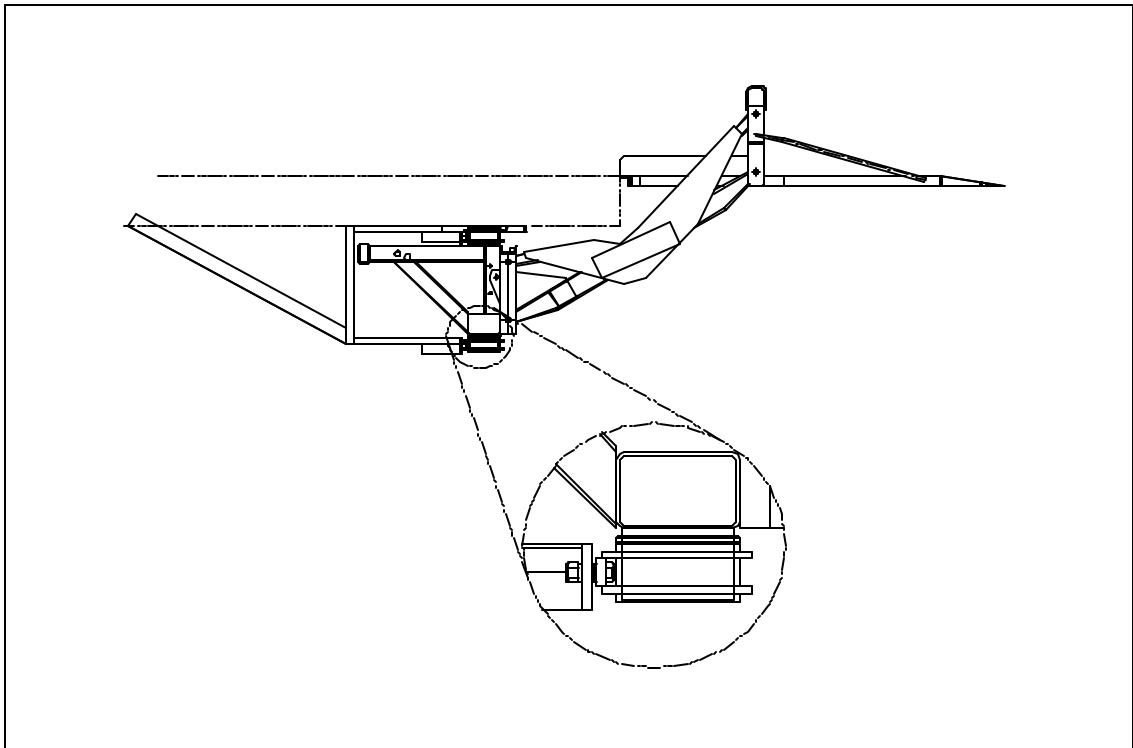
1. Check for any unusual noises, vibrations, or lack of free movement.
2. Check for any physical damage to the liftgate such as bent or twisted parts, cracked welds, or missing parts. Repair or replace as required.
3. Check the platform for being level with the ground when raised up to bed height. Make any adjustments as required. Refer to platform leveling.
4. Check that all pivot pins and platform pins are in place and properly retained.
5. Check for oil leaks around the lift cylinder, hydraulic hose, fittings, and power unit. Tighten fittings, replace parts as required to stop any leaks.
6. Check all electrical connections for signs of corrosion or looseness. Clean and tighten as required.
7. Check the oil level in the power unit receiver. With the platform lowered down to ground level, the oil level should be within a half inch of the top of the receiver. Fill with **Dextron Automatic Transmission Fluid ONLY**.
8. Check that all covers and guards are in place and secure.

### **Once every six months:**

1. Perform all of the checks above.
2. Check for dirty or contaminated hydraulic oil. Flush and replace hydraulic oil.
3. Clean all dirt and residues out from inside and outside the liftgate.

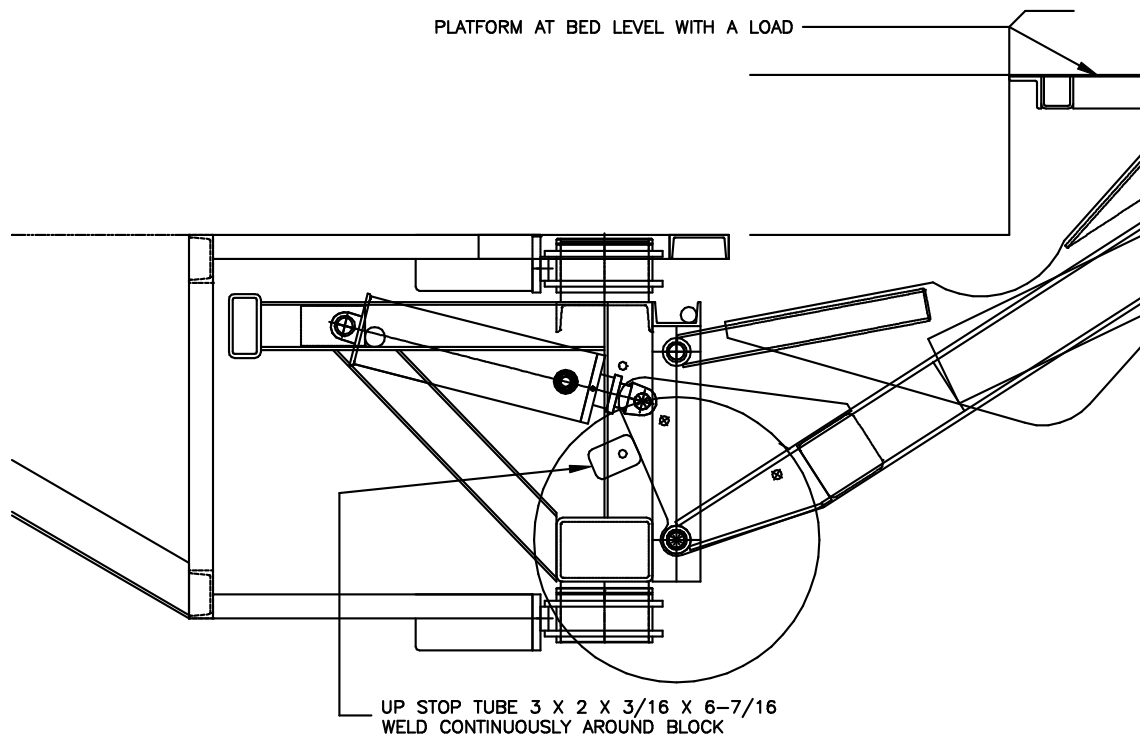
## **PLATFORM LEVELING**

The platform should be parallel to the ground. If minor adjustments are needed, add washers between the lower pivot tube assembly and the outer frame assembly. Adding 1/4" at the lower pivot will raise the tip of the platform up approximately 1". See illustration.



## UP STOP

Put platform at bed level with a load on it. Weld the 3 x 2 x 3/16 x 6-7/16 up stop to the two post as shown bellow. Weld both ends of the up stop continuously to the two post.

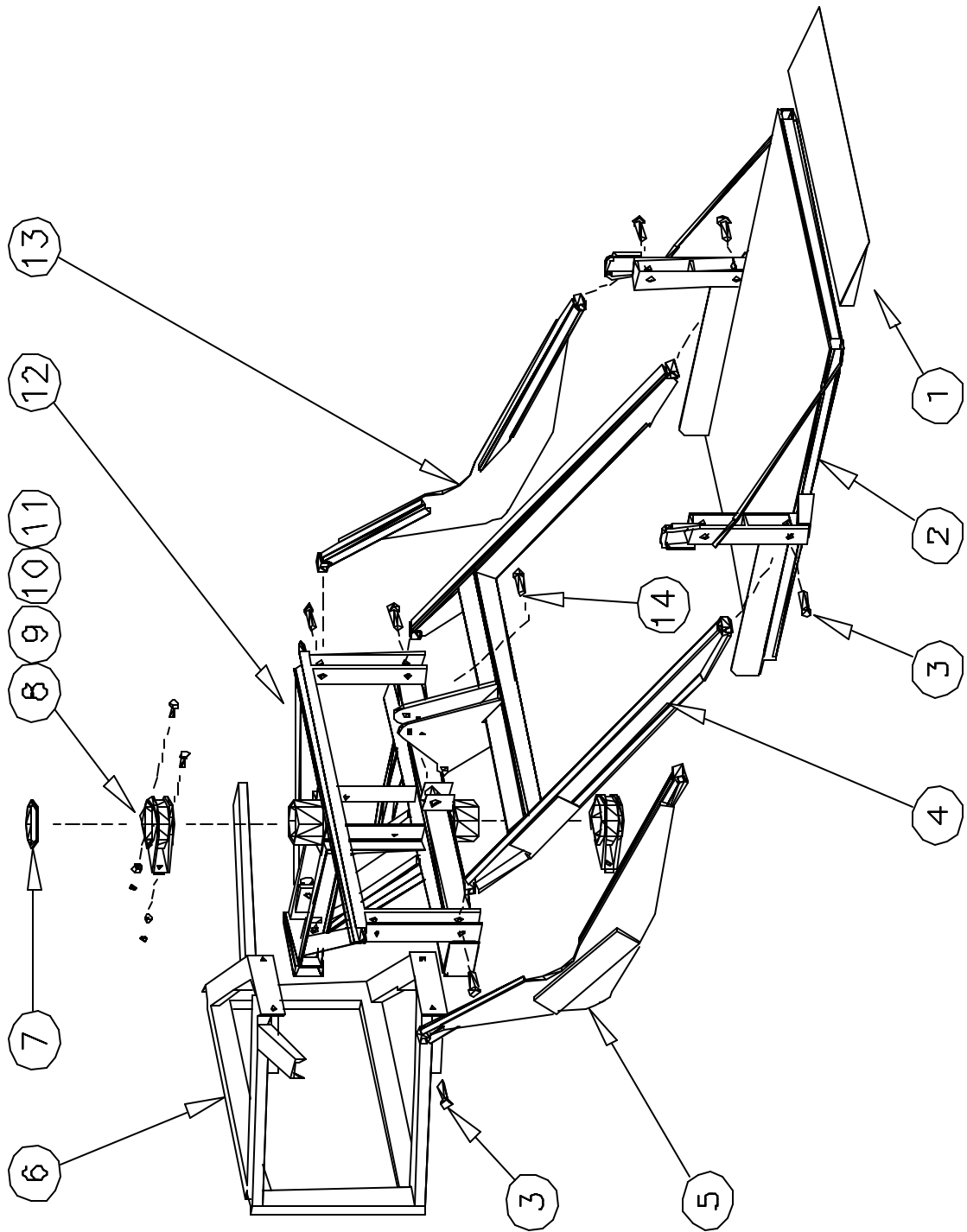


## LSG ASSEMBLY

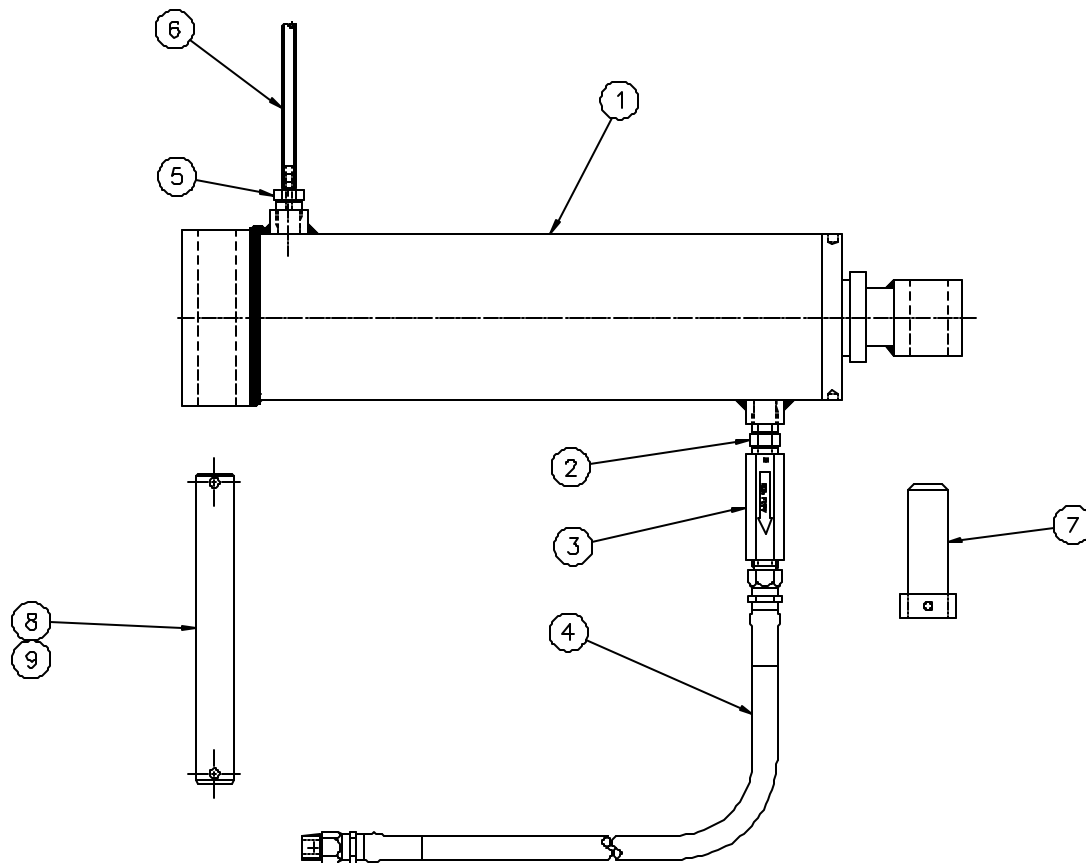
ITEM NO.	PART NO.	DESCRIPTION
1	CA-815-076	PLATFORM RAMP ASSY
2	DT-815-082-001	PLATFORM 42 X 60
2	DT-815-082-002	PLATFORM 42 X 48
2	DT-815-082-003	PLATFORM 42 X 42
3	Q5001-0A4	PIVOT PIN
4	DA-815-044	COMPRESSION ARM ASSY
5	DA-815-043	TENSION ARM ASSY LH
6	DA-815-048	OUTER FRAME ASSY
7	S436-000.375	TOP RETAINING RING
8	BA-815-029	OUTER PIVOT TUBE ASSY
9	P11049	BOLT 5/8-11 X 2
10	P27026	SPLIT LOCK WASHER
11	P23530	LOCK NUT
12	DA-815-054	INNER FRAME ASSY
13	DA-815-025	TENSION ARM ASSY RH
14	Q5001-0A14	PIVOT PIN

## OPTIONAL RETENTION RAMP ASSEMBLY

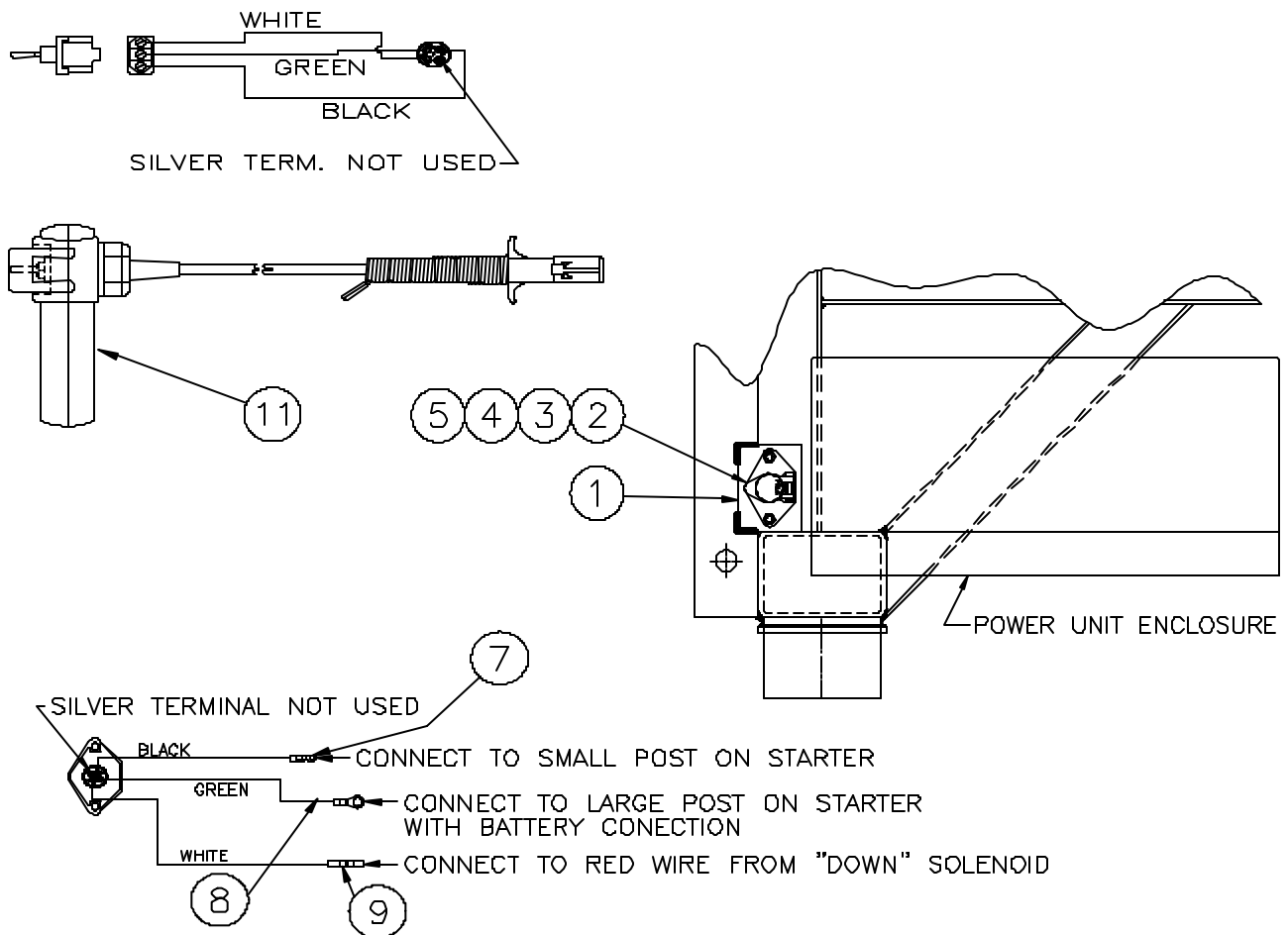
PART NO.	DESCRIPTION
DA-815-079	RETENTION RAMP OPTION (COMPLETE)
Q5001-0A23	PIVOT PIN
AP-815-080	HINGE-PLATFORM SIDE
AP-815-081	HINGE-RAMP SIDE
P38528	CHAIN



**HYDRAULIC ASSEMBLY**

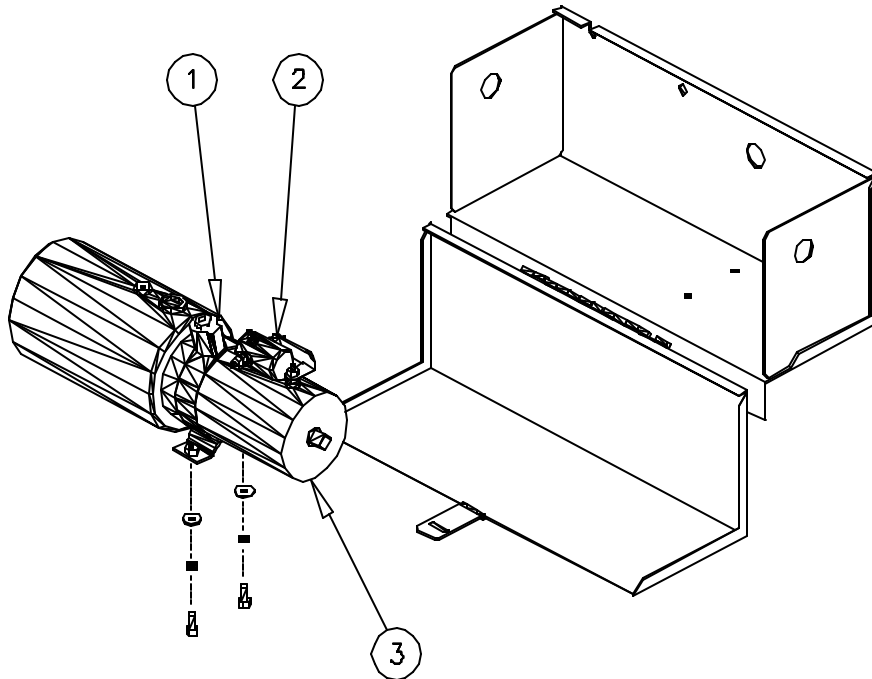


ITEM NO.	PART NO.	DESCRIPTION
	CA-815-065	HYD. CYLINDER ASSEMBLY (COMPLETE)
1	P33776	HYDRAULIC CYLINDER
2	P33064	NIPPLE
3	P33914	FLOW CONTROL
4	AT-501-100-032	HYDRAULIC LINE ASSY
5	P33787	STR CONNECTOR
6	P33790	CLEAR VINYL TUBE
7	Q5001-0A14	PIVOT PIN
8	AP-815-063	TOP RAM MTG. PIN
9	P47532	ROLL PIN



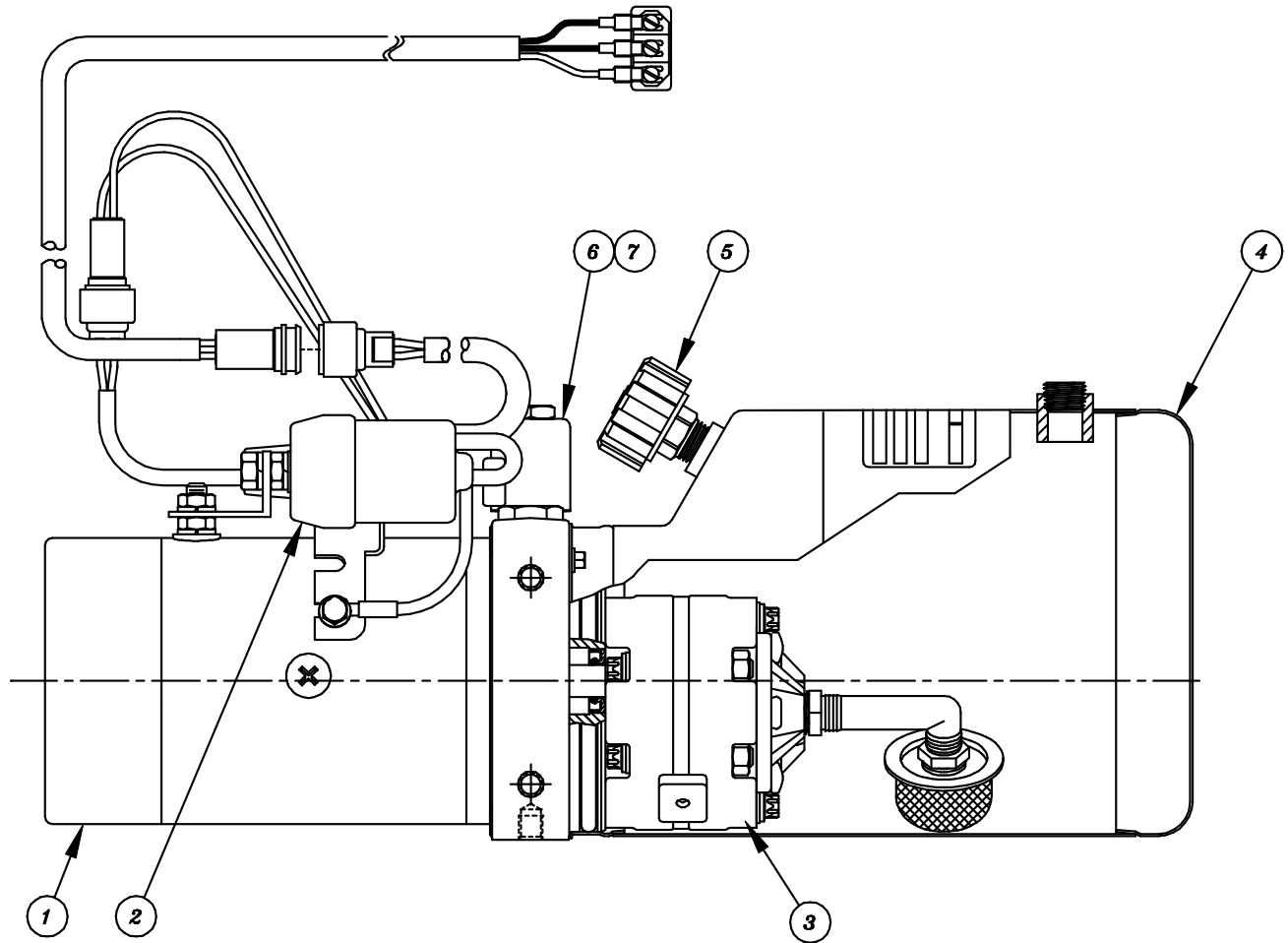
ITEM NO.	PART NO.	DESCRIPTION
1	AP-551-236	MTG. PLATE
2	P46329	PLUG
3	P10517	BOLT
4	P26007	FLAT WASHER
5	P23502	LOCK NUT
6	P46186	JACKETED WIRE
7	P46047	SMALL RING TERMINAL
8	P46235	LARGE RING TERMINAL
9	P46156	BUTT CONNECTOR
10	P46250	LOOM CLAMP
11	P46522	WALK AROUND

**MONARCH POWER UNIT  
(BLACK MOTOR WITH  
METAL TANK)**



ITEM NO.	PART NO.	DESCRIPTION
	P33774	POWER UNIT (COMPLETE)
1	LH121	DOWN SOLENOID
2	LH120	STARTER SOLENOID
3	LH150018	MOTOR
	CA-800-244	POWER PACK BOX ASSY
	P26501	FLAT WASHER 3/8
	P26017	LOCK WASHER 3/8
	P10526	HEX BOLT 3/8 X 16

# FENNER/SPX POWER UNIT

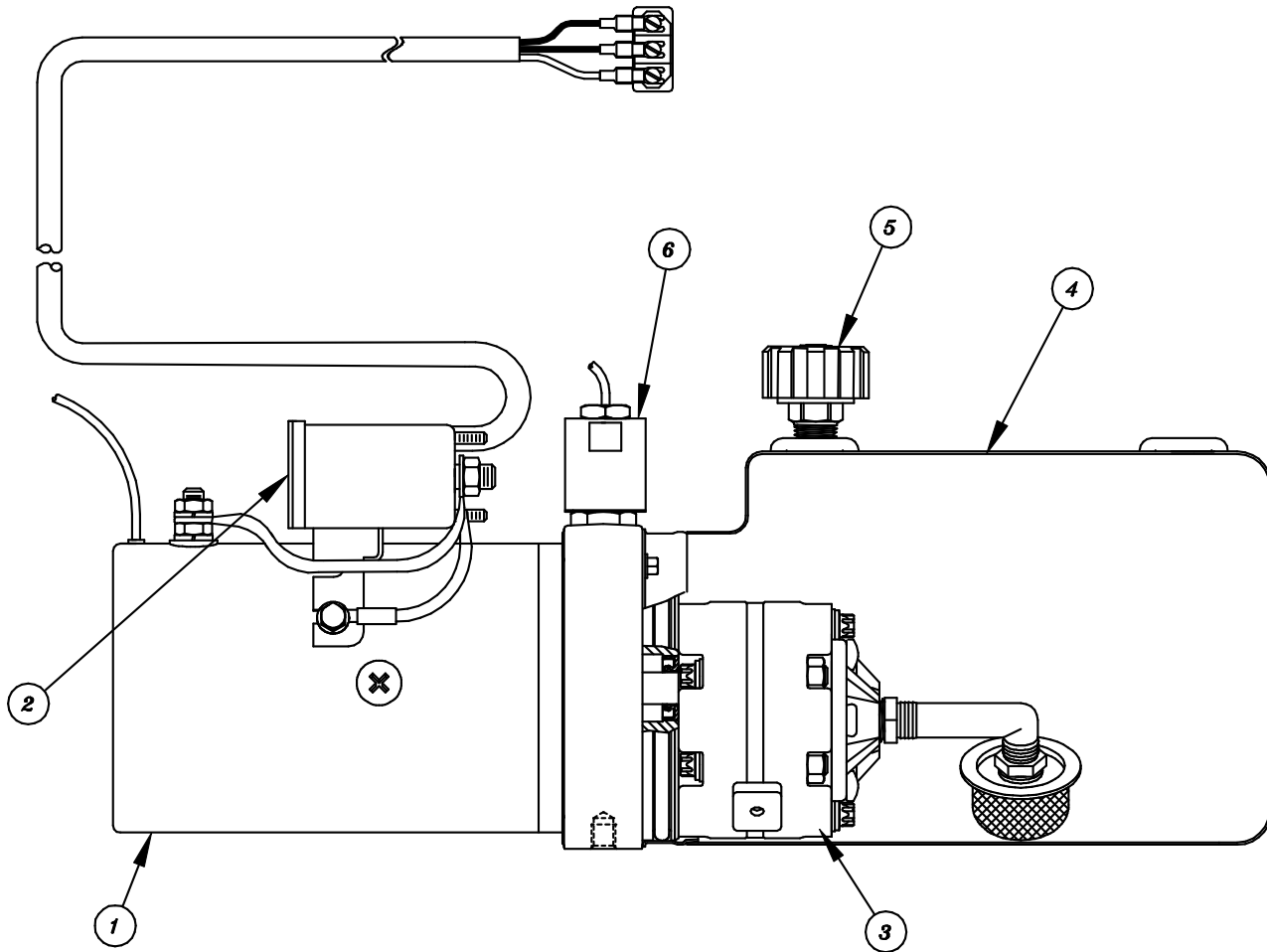


## PARTS LIST

ITEM NO.	PART NO.	DESCRIPTION
	P33967	POWER UNIT (COMPLETE (DOES NOT INCLUDE WIRE HARNESS))
1	P33969	MOTOR
2	P33895	STARTER SOLENOID
3	P33970	PUMP
4	P33971	TANK
5	P33667	BREATHER CAP
6	P33981	VALVE STEM
7	P33982	COIL

# MONARCH POWER UNIT

BLACK MOTOR WITH THERMAL SWITCH PROTECTION



## PARTS LIST

ITEM NO.	PART NO.	DESCRIPTION
	P33991	POWER UNIT (COMPLETE)
1	P33992	MOTOR
2	P34016	STARTER SOLENOID
3	LH150003	PUMP
4	P34018	TANK
5	LH150015	BREATHER CAP
6	LH121	DRAIN VALVE