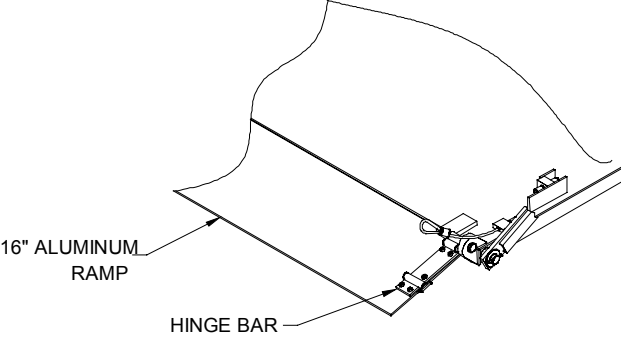
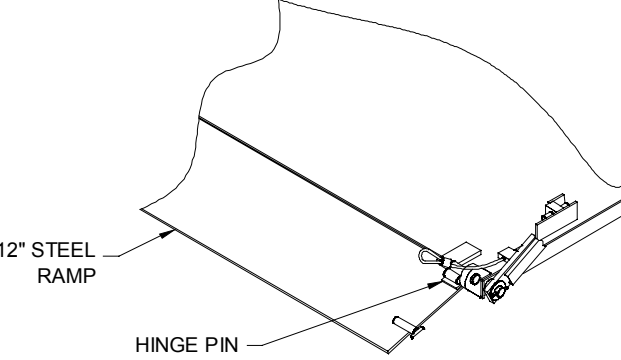
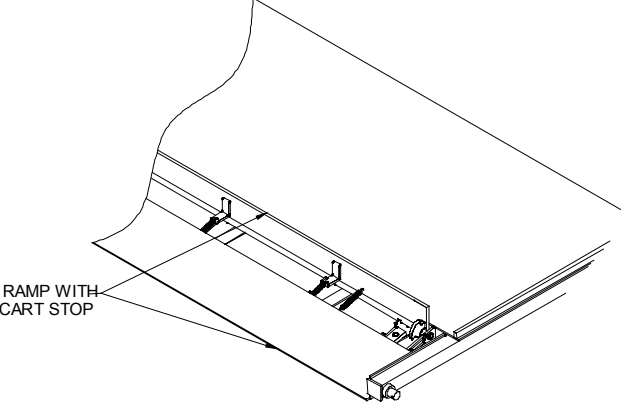
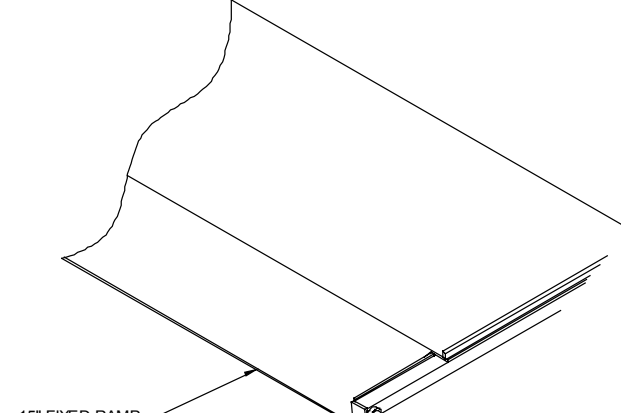

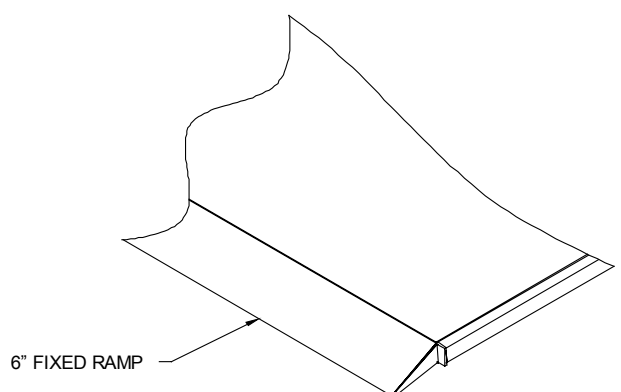
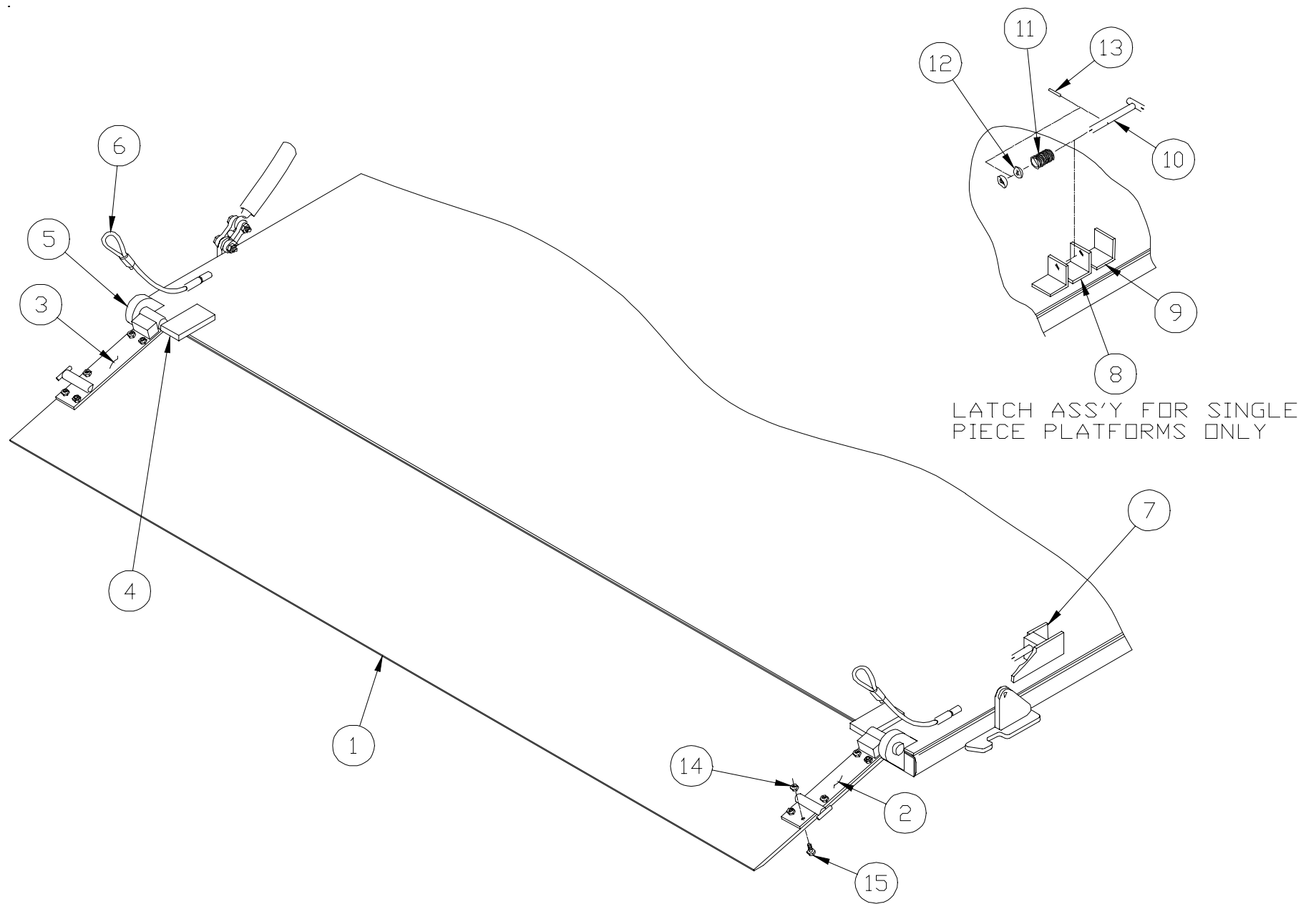


# WDL-SERIES RAMPS

 <p>16" ALUMINUM RAMP</p> <p>HINGE BAR</p>	 <p>12" STEEL RAMP</p> <p>HINGE PIN</p>
<p style="text-align: center;"><b>PM-298 (prior to 11-01)</b> <b>PM-298A (after 11-01)</b></p>	<p style="text-align: center;"><b>PM-298 (prior to 11-01)</b> <b>PM-298A (after 11-01)</b></p>
 <p>15" RAMP WITH CART STOP</p>	 <p>15" FIXED RAMP</p>
<p style="text-align: center;"><b>PM-295 (all widths) thru 10/98</b> <b>PM-456 (80") 10/98 thru 1/02</b> <b>PM-482 (86") 10/98 thru 1/02</b> <b>PM-456A (all widths) after 1/02</b></p>	<p style="text-align: center;"><b>PM-295 (all widths) thru 10/98</b> <b>PM-456 (80") 10/98 thru 1/02</b> <b>PM-482 (86") 10/98 thru 1/02</b> <b>PM-456A (all widths) after 1/02</b></p>
 <p>6" FIXED RAMP</p>	 <p>6" FIXED RAMP</p>
	<p style="text-align: center;"><b>PM-297 thru 10/98</b> <b>PM-458 10/98 thru 1/02</b> <b>PM-458A 1/02 thru 7/03</b> <b>PM-458B after 7/03</b></p>

# 16" ALUMINUM & 12" STEEL FOLDING RAMPS



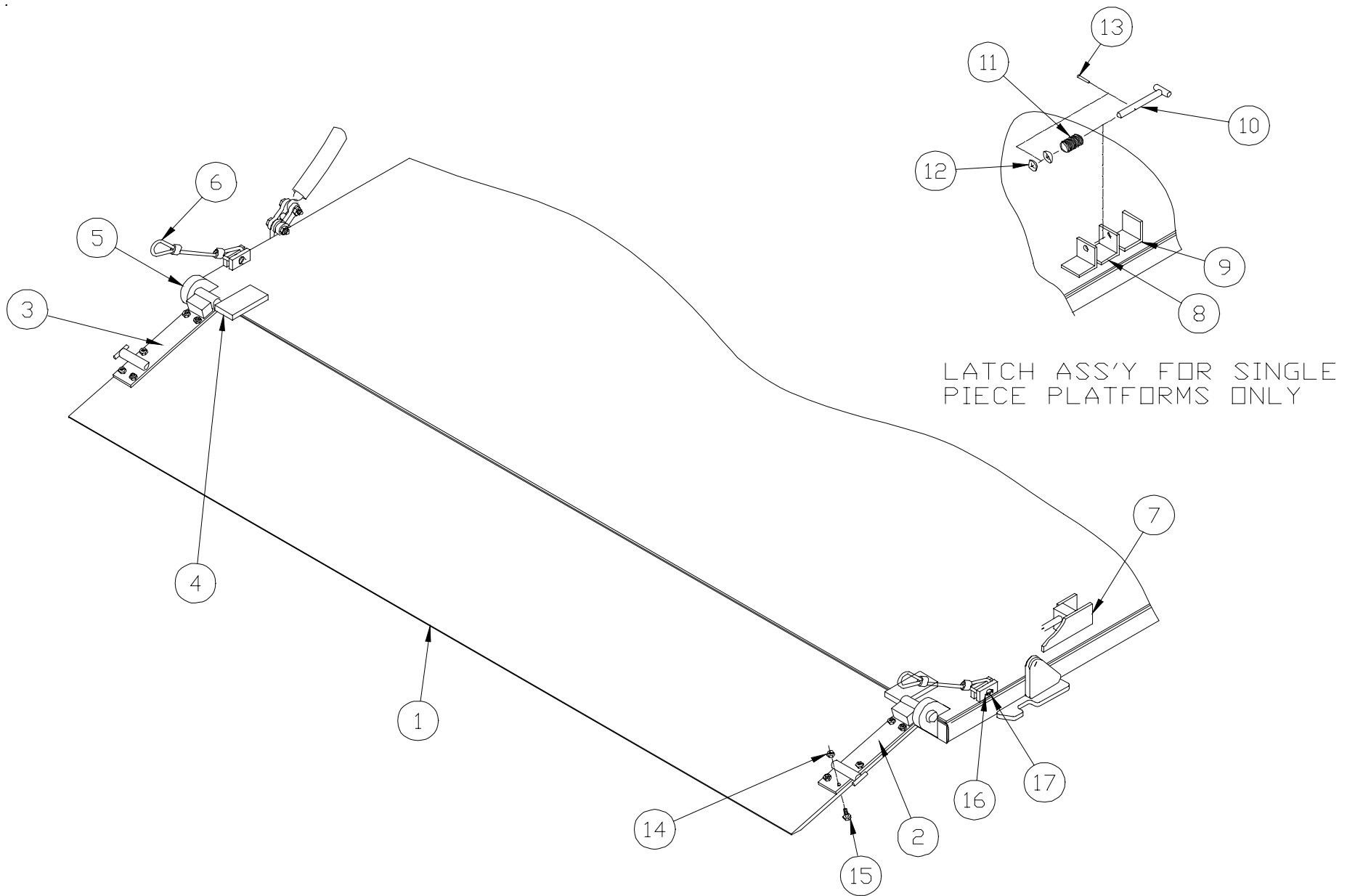
**WALTCO  
TRUCK EQUIPMENT CO.  
WDL RM SERIES**

REVISED: 12-11-98  
E.O. 3736  
REV. 04

**PM-298**

ITEM	PART NUMBER	QTY	DESCRIPTION
1	85803187	1	16" Aluminum Ramp (80" Platform)
	85803151	1	16" Aluminum Ramp (86" Platform)
	31416501	1	12" Steel Folding Ramp (80" Platform)
	32416501	1	12" Steel Folding Ramp (86" Platform)
2	37415501	1	Curb Side Hinge Plate Assembly (Aluminum Ramp Only)
3	37415551	1	Street Side Hinge Plate Assembly (Aluminum Ramp Only)
4	37415401	2	Ramp Brace Bar
5	37414801	2	Ramp Hinge Clevis
6	37419501	2	Retention Cable Assembly
7	37414501	1	Ramp Latch Assembly (2 Pc. Platform Only)
8	85803484	2	Ramp latch Angle (1 Pc. Platform Only)
9	85803488	1	Pin Guard Angle (1 Pc. Platform Only)
10	85803485	1	Ramp Latch Pin Assembly (1 Pc. Platform Only)
11	20215400	1	Ramp Latch Pin Spring (1 Pc. Platform Only)
12	75088056	2	1/2" Plain Washer (1 Pc. Platform Only)
13	75089553	1	1/4" x 1-1/4" Coiled Pin (1 Pc. Platform Only)
14	75085193	10	3/8"-16 Hex Lock Nut (Aluminum Ramp Only)
15	75086057	10	3/8"-16 x 1-1/4" Hex Head Bolt (Aluminum Ramp Only)

# 16" ALUMINUM & 12" STEEL FOLDING RAMPS



**WALTCO  
TRUCK EQUIPMENT CO.  
WDL RM SERIES**

REVISED: 11-2-2001  
E.O. 4088  
REV. 01

**PM-298A**

ITEM	PART NUMBER	QTY	DESCRIPTION
1	85803187	1	16" Aluminum Ramp (80" Platform)
	85803151	1	16" Aluminum Ramp (86" Platform)
	31416501	1	12" Steel Folding Ramp (80" Platform)
	32416501	1	12" Steel Folding Ramp (86" Platform)
2	37415501	1	Curb Side Hinge Plate Assembly (Aluminum Ramp Only)
3	37415551	1	Street Side Hinge Plate Assembly (Aluminum Ramp Only)
4	37415401	2	Ramp Brace Bar
5	37414801	2	Ramp Hinge Clevis
6	37419502	2	Retention Cable Assembly
7	37414501	1	Ramp Latch Assembly (2 Pc. Platform Only)
8	85803484	2	Ramp latch Angle (1 Pc. Platform Only)
9	85803488	1	Pin Guard Angle (1 Pc. Platform Only)
10	85803485	1	Ramp Latch Pin Assembly (1 Pc. Platform Only)
11	20215400	1	Ramp Latch Pin Spring (1 Pc. Platform Only)
12	75088056	2	1/2" Plain Washer (1 Pc. Platform Only)
13	75089553	1	1/4" x 1-1/4" Coiled Pin (1 Pc. Platform Only)
14	75085193	10	3/8"-16 Hex Lock Nut (Aluminum Ramp Only)
15	75086057	10	3/8"-16 x 1-1/4" Hex Head Bolt (Aluminum Ramp Only)
16	75084053	2	3/32" x 1" lg. Cotter Pin
17	27310303	2	1/2" Dia. Clevis Pin